

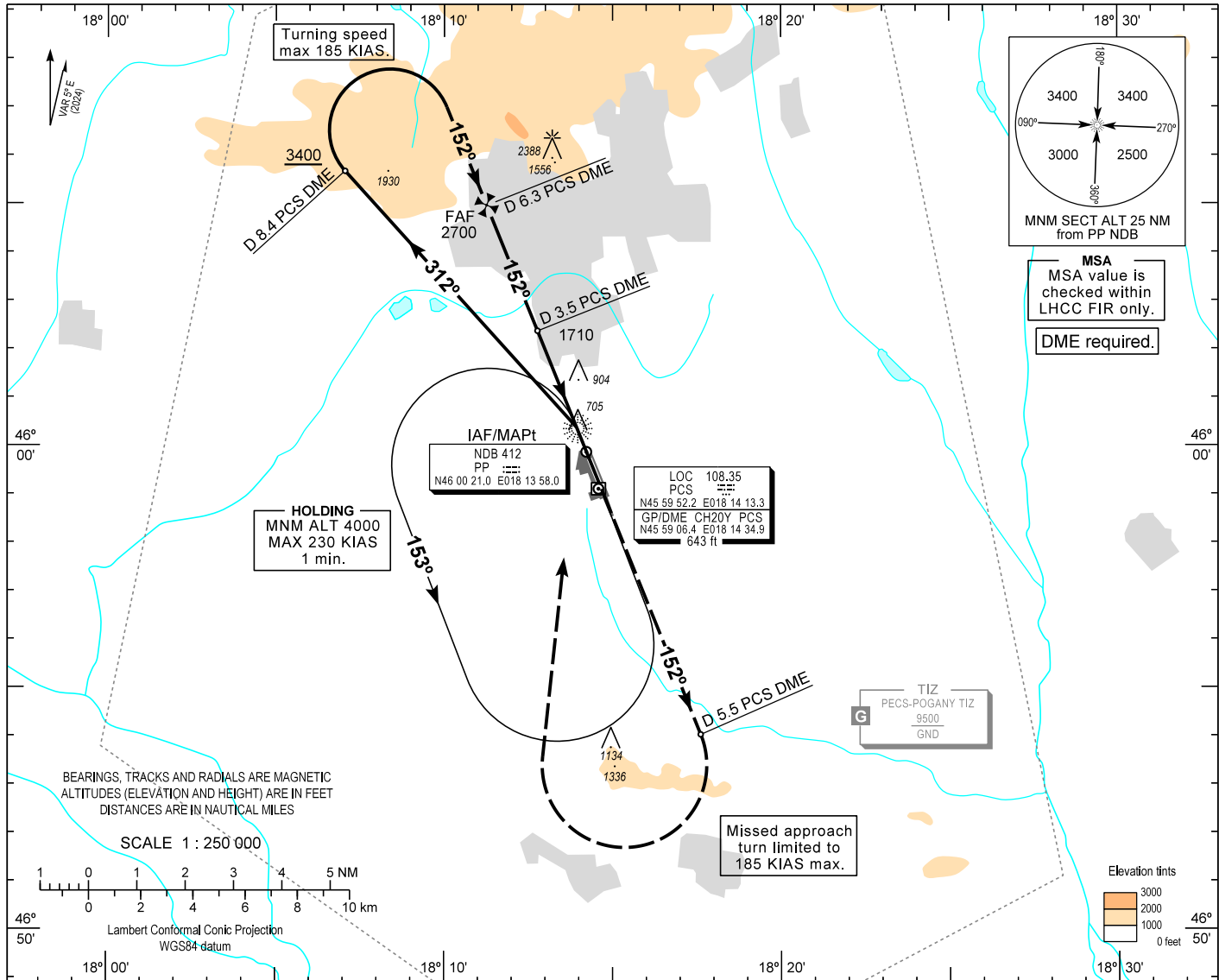
AIP HUNGARY

INSTRUMENT  
APPROACH  
CHART - ICAO

AERODROME ELEV 651  
HEIGHTS RELATED TO  
THR RWY 15 - ELEV 650

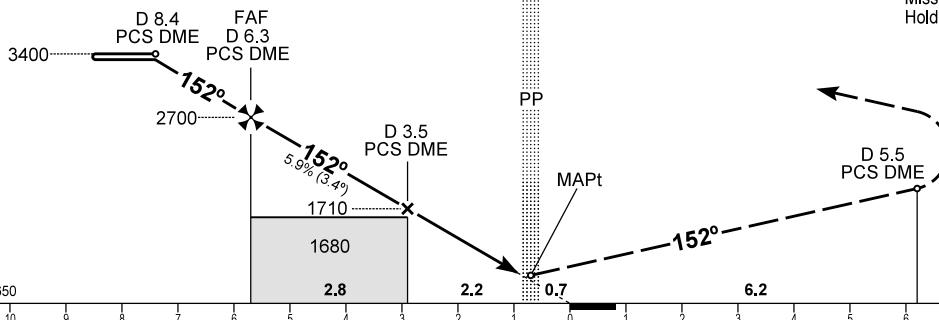
POGÁNY INFO 126.915  
BUDAPEST INFORMATION (WEST) 125.500

PÉCS/POGÁNY  
NDB RWY 15  
(ACFT CAT A, B, C, D)



TRANSITION ALTITUDE  
10000

MISSED APPROACH  
Climb straight ahead to 4000.  
At D 5.5 PCS DME turn right inbound PP NDB.  
Missed approach turn limited to 185 KIAS maximum.  
Hold at 4000 over PP NDB.



[ILS RDH 50]

CHANGE: magnetic variation, RWY designator, FAF, minima

OCA (OCH)	A	B	C	D	DME PCS	NM	6.0	5.0	4.0	3.0	2.0	
STRAIGHT-IN APPROACH	1150 (500)				DIST THR / RWY 15	NM	5.3	4.3	3.3	2.3	1.3	
CIRCLING APPROACH	ft AMSL	1200	1200	1300	1530	ALTITUDE	ft	2590	2250	1890	1530	1180
	VIS. m	1900	2800	3700	4600	Timing not authorized to define the MAPt.						
					GROUND SPEED	kt	60	90	120	150	180	
					FAF - MAPt 4.94 NM	min:sec	4:56	3:18	2:28	1:59	1:39	
					Rate of descent (357 ft/NM))	ft/min	360	540	710	890	1070	

## AD 2 LHPP INSTRUMENT APPROACH CHART NDB RWY 15

Arrivals on 282° - 342° may enter the base turn procedure directly at 4000  
above PP NDB according to the advice of POGÁNY INFO.  
Other arrivals shall enter the holding procedure.

### NDB approach from PP NDB:

Initial altitude: 4000. 185 KIAS max.

Leave PP NDB on QDR 312 PP and descend to 3400.

At D 8.4 PCS DME turn right and intercept QDM 152 PP (final track), descend to 2700.

When crossing D 6.3 PCS DME (FAF), descend to 1710.

When crossing D 3.5 PCS DME, descend to published minimum altitude.

### Holding procedure:

Holding fix: PP NDB.

Left hand holding pattern.

Inbound track: 333°

Outbound track: 153°

Rate of turn: 3°/sec. or 25° bank angle  
(whichever requires lesser bank)

Outbound timing: 1 min.

Minimum holding altitude: 4000

Final approach descent: 3.36°